



## Railway Energy Metering Applications

John Hegarty  
Geneva, 06.11.2017

## PEP Symposium 2017 Panel Discussion

John Hegarty  
Program Manager Energy Metering

### **Swiss Federal Railways**

Infrastructure Energy

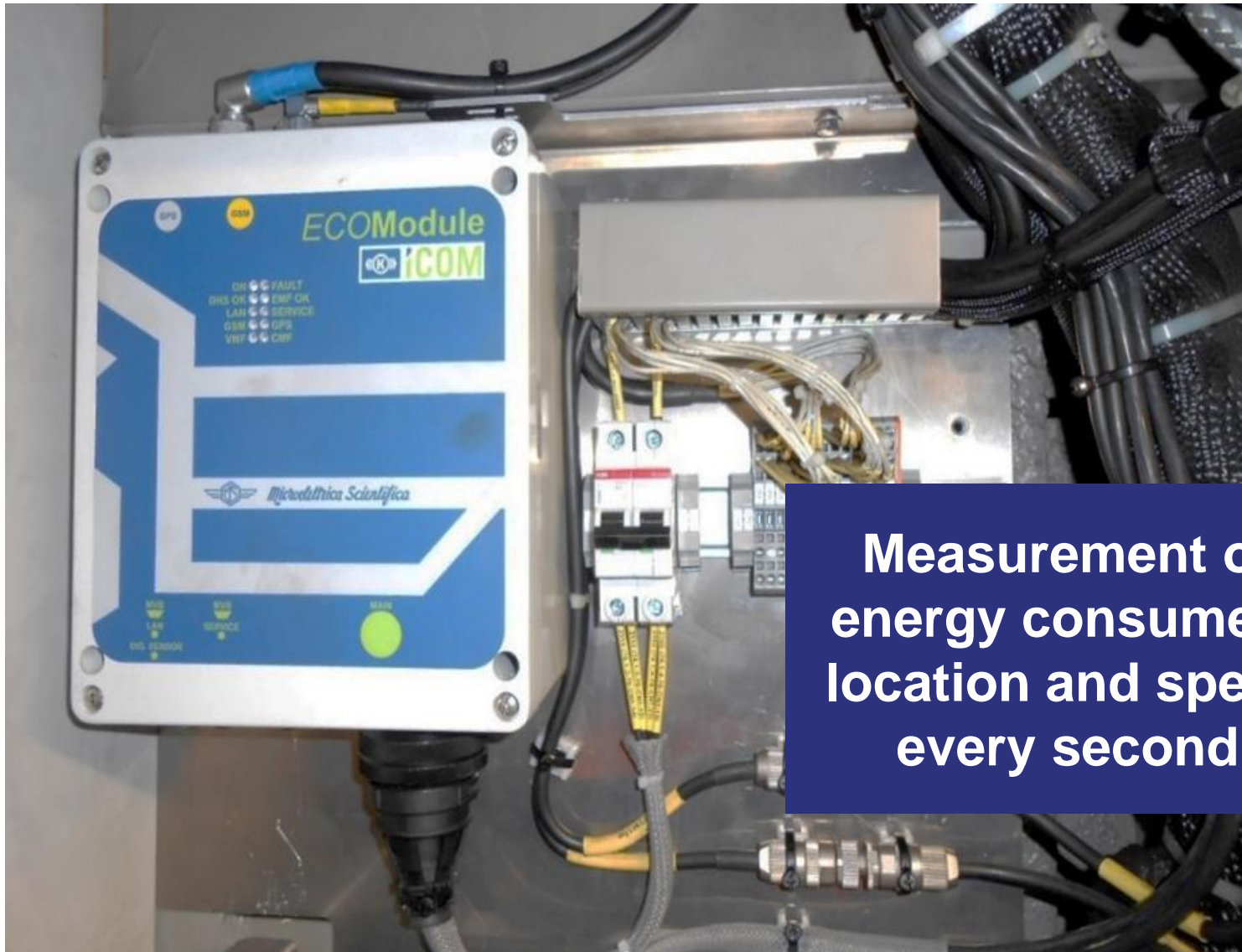
Industriestrasse 1

CH-3052 Zollikofen, Schweiz

Mobile +41 79 211 38 23

[john.hegarty@sbb.ch](mailto:john.hegarty@sbb.ch) / [www.sbb.ch](http://www.sbb.ch)

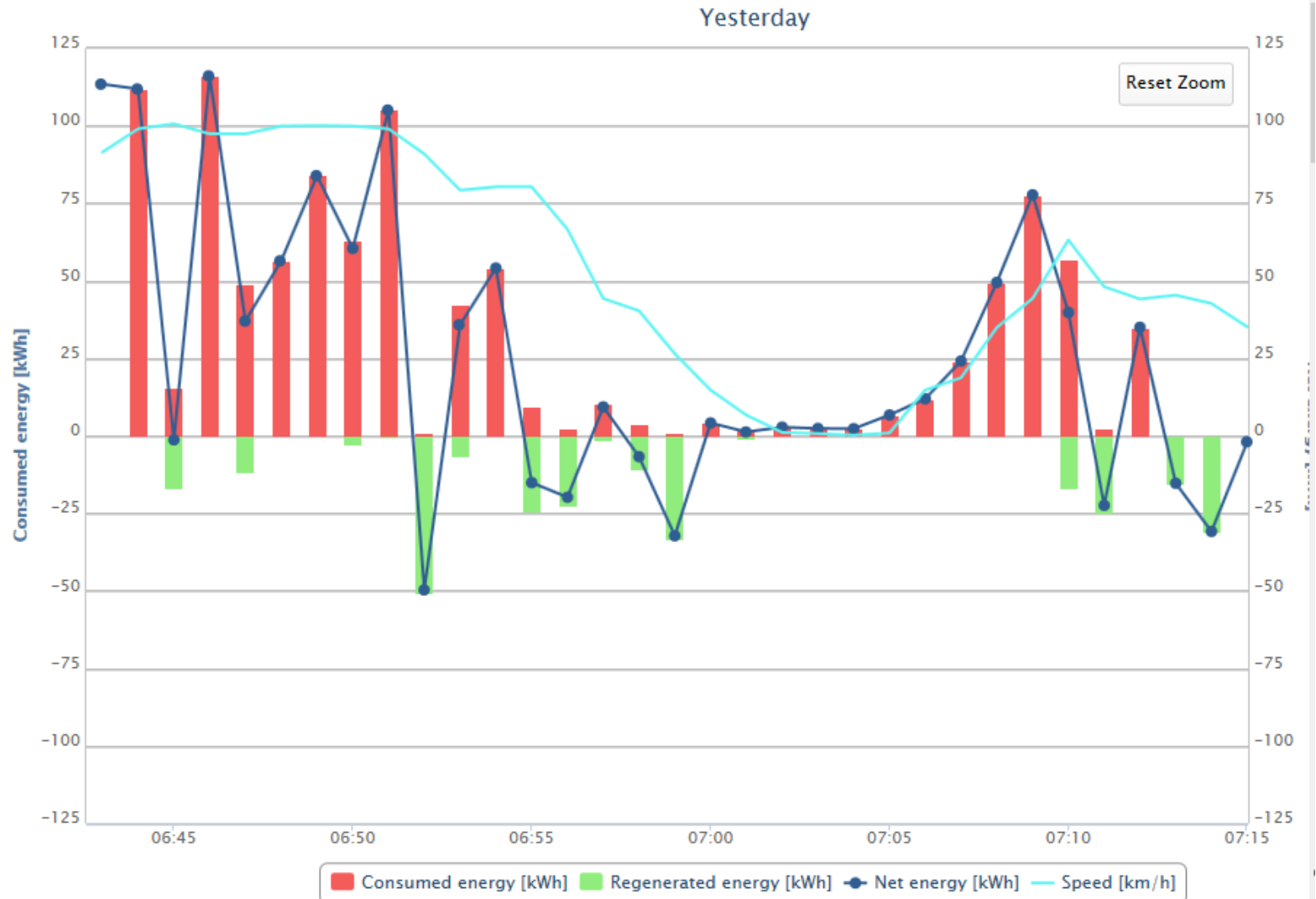
# Energy meter for rail applications



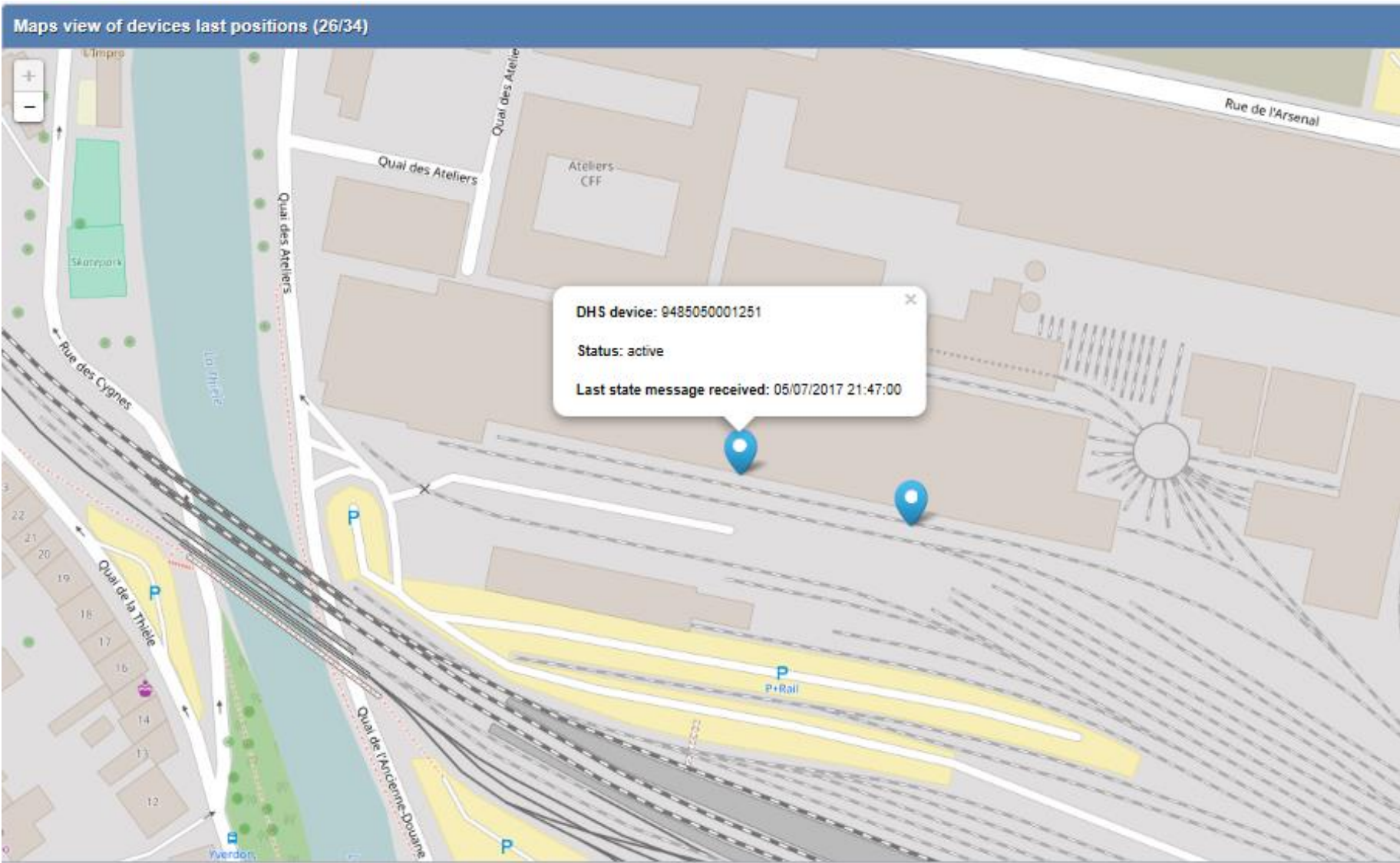
Measurement of energy consumed, location and speed every second

# Measurement of energy consumption

Chart view

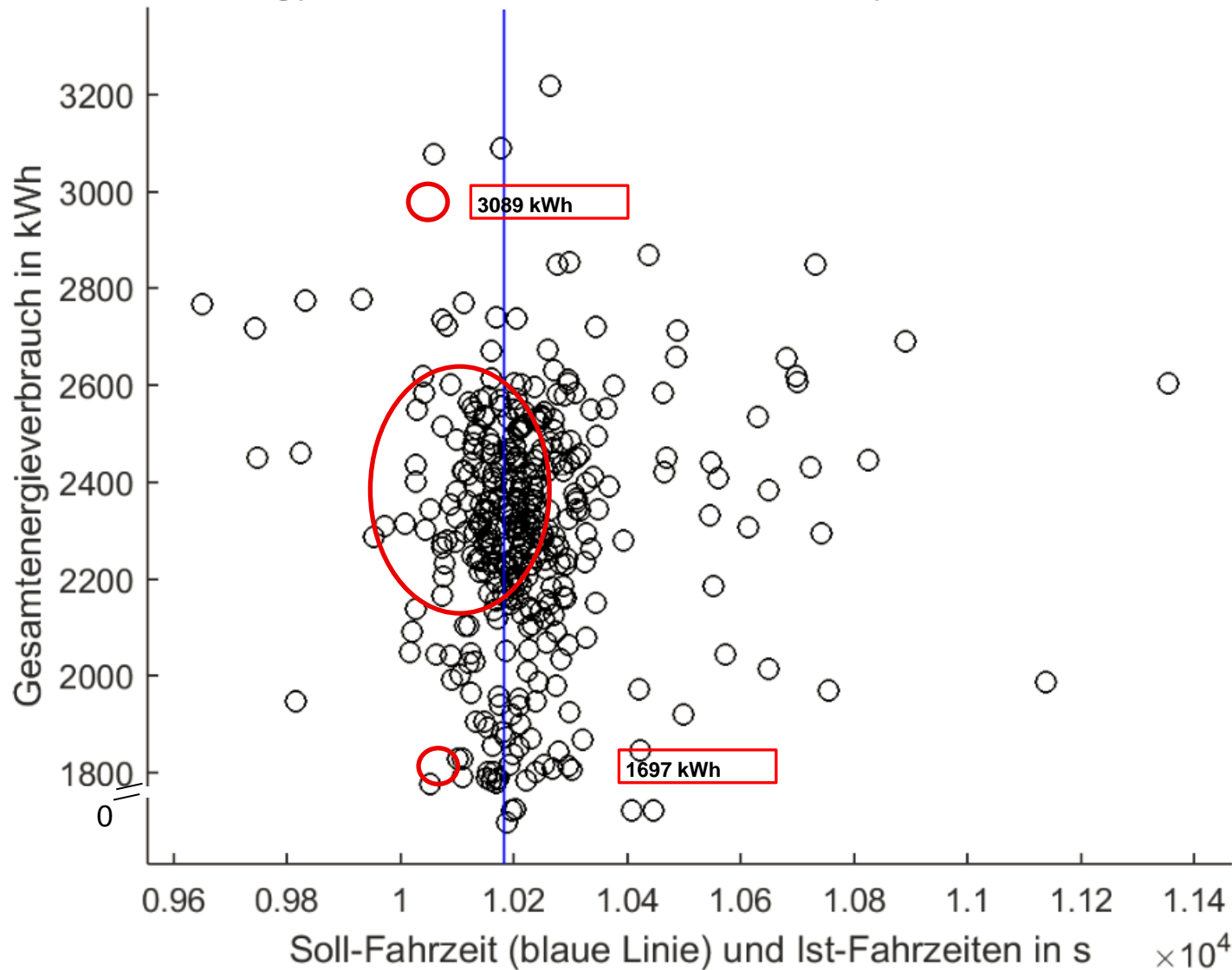


# .... position and speed, every 1Sec



# Identifying savings potential from metered data

Energy consumption vs. punctuality



# Energy management applications using metered data

e.g. more efficient driving with a train driver app

